

# UBC-DS31

## Freescal e ARM Cortex-A9 i.MX6 Full HD RISC Signage Box

NEW



### Features

- Freescale i.MX6 Cortex-A9 Dual 1 GHz
- On-board DDR3 1 GB & 4 GB Flash
- Supports Full HD 1080P H/W video codec engine
- Giga LAN networking capability
- Low power, fanless design
- Supports wall mount, VESA mount and a flexible mount with 2 screws
- Removable cover for SD card
- SUSIAccess for Signage



### Introduction

UBC-DS31 provides enough power for Full HD video, and is powered by a Freescale ARM Cortex-A9 i.MX6 dual-core high performance processor with built-in Gigabit Ethernet for networking. It is easy to set up with its compact size and flexible mounting design, including wall mount, and VESA 75/100 mount. UBC-DS31 is easy to assemble in any application environment and comes preloaded with SUSIAccess software for remote management and Signage Player control.

SUSIAccess for signage is based on the Linux QT framework, and integrates multiple functions including content production and device management. "Content Producer" includes a content editor, layout editor and content description; "Device Conductor" supports status monitoring, content dispatch and firmware updates. Users can manage and control the content of all devices through Ethernet from servers and management centers

### Specifications

Processor System	CPU	Freescal e ARM Cortex-A9 i.MX6 Dual 1 GHz
Memory	Technology	DDR3 1066 MHz
	Capacity	On-board DDR3 1 GB
	Flash	4 GB eMMC NAND Flash for O.S. and 4 MB SPI NOR Flash for Advantech boot loader
Graphics	HDMI	1
	VGA	1
	Graphics Engine	2 IPUs. OpenGL ES 2.0 for 3D, BitBlit for 2D and OpenVG 1.1
	H/W Video Codec	Decoder: MPEG-4 ASP, H.264 HP, H.263, MPEG-2 MP Encoder: MPEG-4 SP, H.264 BP, H.263
Ethernet	Chipset	Freescal e i.MX6 integrated RGMII
	Speed	1 10/100/1000 Mbps
RTC	RTC	Yes
WatchDog Timer	WatchDog Timer	Yes
I/O	USB	1
	Audio	1 Line-out
	SPDIF	-
	SDIO	1 x SD slot
	Serial Port	1 x RS-232 (CTS,RTS,Tx, Rx)
	Button	1 Reset button
Indicator	LED	2 Green LED for the system power and RF status
Expansion	SD Socket	1 SD slot
Power	Power Supply Voltage	12 V <sub>DC</sub>
	Power Type	DC-in
	Power Consumption	2.3 Watts
Environment	Operational Temperature	0 - 40° C
	Operating Humidity	5%~95% Relative Humidity, non-condensing
Mechanical	Dimensions (W x D)	191 x 129 x 30 mm with metal plate 166 x 117 x 30 mm without metal plate
	Mounting	Wall mount, VESA 75/100, Flexible mount with two screw holes on the metal plate
	Weight	265g
Operating System	SUSIAccess	SUSIAccess for Signage/ Android
Certifications		CE/FCC Class B

## Software Key Features

### SUSIAccess for Signage

Remote Device Management



Content Producer

#### Content Producer

- Three steps to make content
- Layout templates
- Video/picture play list editor
- Marquee editor (size, color, direction...)
- Export content to USB disk



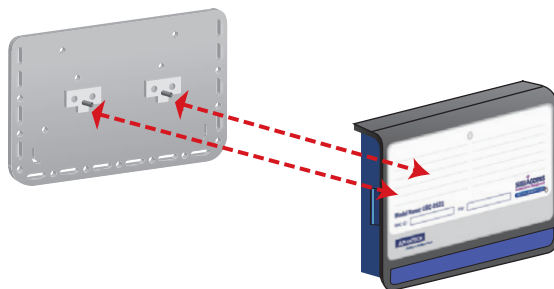
Device Conductor

#### Device Conductor

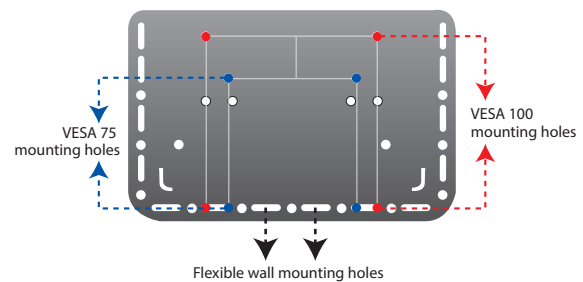
- Device information (Dispatch, Storage, System...)
- Remote dispatch
- Remote control (Volume, Brightness)
- Remote firmware upgrade
- Error status alarm

## Simply Assembly

### System docking



### Fix to wall using standard VESA or flexible wall mounting



## Ordering Information

Part No.	CPU	Memory	Flash Memory	UART	LAN	USB Host	HDMI	Size	Power input	Operating Temperature
UBC-DS31CD-MD00E	Freescale i.MX6 Dual 1 GHz	1 GB	4 GB	1	1	1	1	191 x 129 x 30 mm	12 V	0 ~ 40° C

## Packing List

Part No.	Description	Quantity
1990022408T000	UBC-D31-SD COVER	1
1931041020	Screws for VESA mount	4
1930003218	Screws for system & VESA mount	2
2022DS3100	UBC-DS31 China RoHS	1
2002DS3110	Quick start Guide	1

## Optional Accessories

Part Number	Description
1757003553	Adapter 100-240V 36W 12V 3A W/O PFC 9NA0361603
170203183C	Power Code 3P Europe (WS-010+WS-083)183cm
170203180A	Power Cord 3P UK 2.5A/3A 250V 1.83M
1700001524	Power Cord 3P UL 10A 125V 180cm
1990022422S000	Fixed rail 71.3Lx6.2W mm YJC-64C for UBC-DS31
1990022423S000	Fixed ring DIA:7.5-8.5 FWM-8K for UBC-DS31

## External I/O

