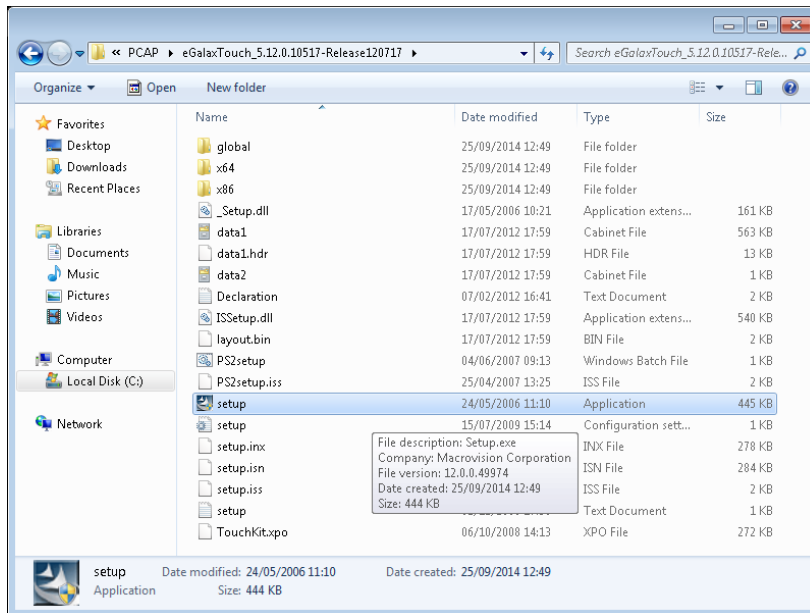


Installing Drivers

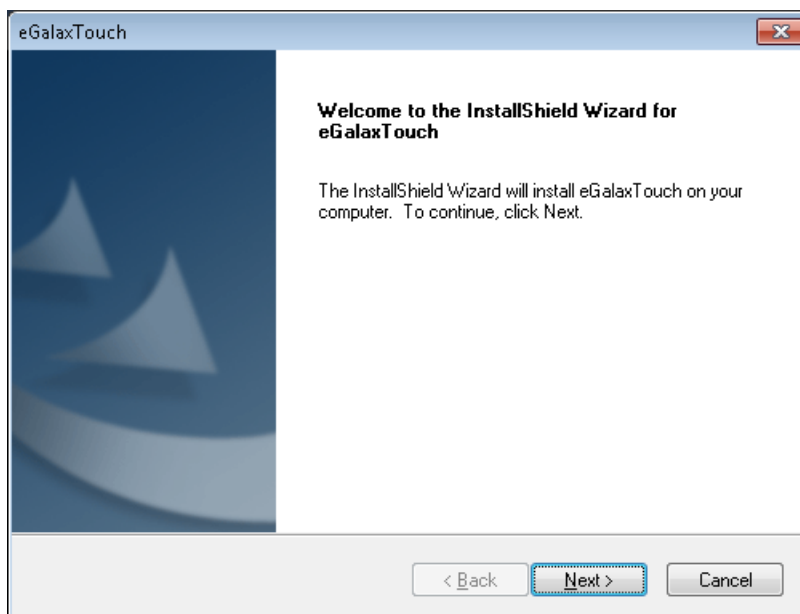
Note: This step is only required if you, the customer, has reinstalled the operating system using an official CKS recovery disc, otherwise skip to 'Calibrating Touchscreen' on page 6.

1. Locate and run the **setup.exe** found in:

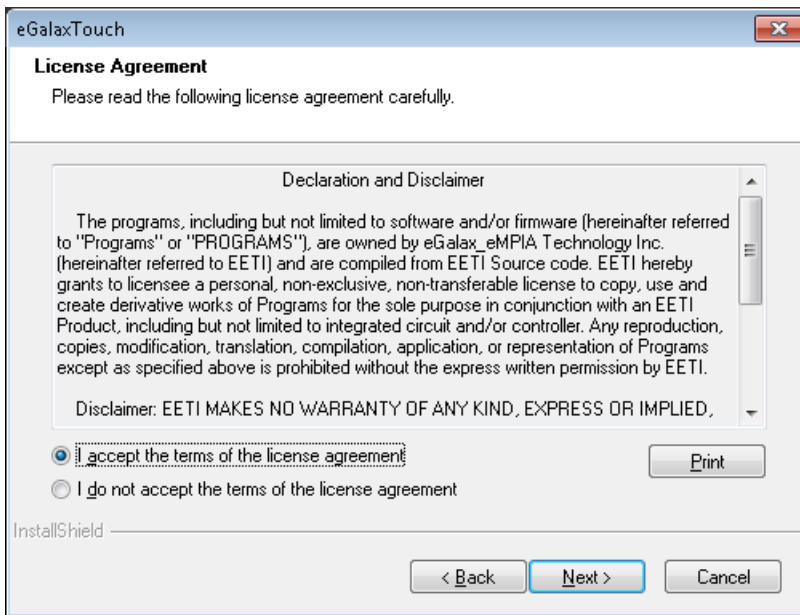
C:\Drivers\Touchscreens\PCAP\eGalaxTouch_5.12.0.10517-Release120717



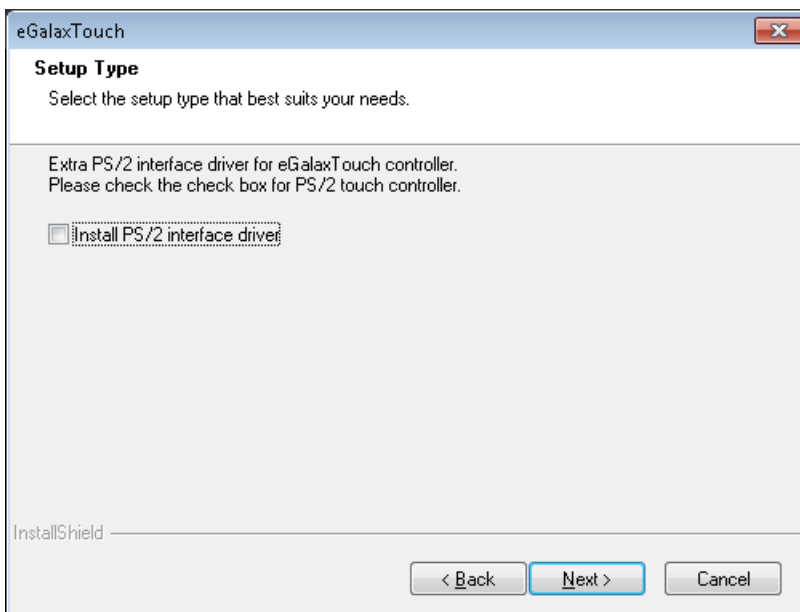
2. Click '**Next**' on the following screen:



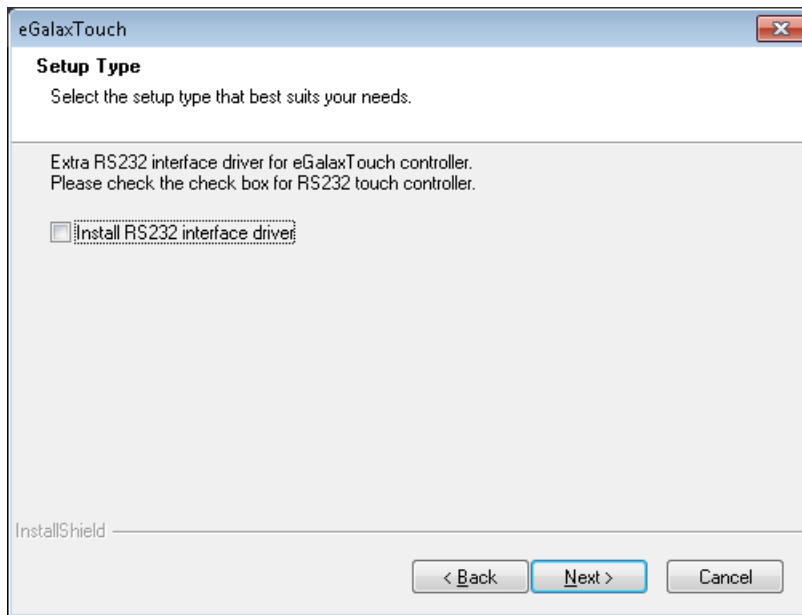
3. Select '**I accept the terms of the license agreement**' and click '**Next**':



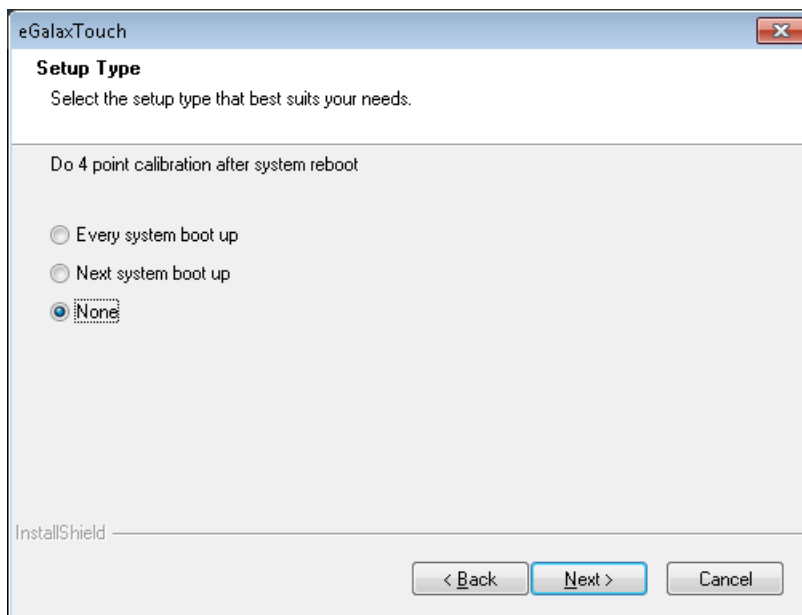
4. Leave '**Install PS/2 interface driver**' unchecked and click '**Next**' :



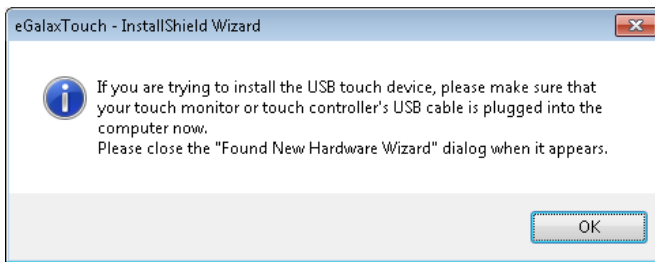
5. Uncheck 'Install RS232 interface driver' and click 'Next':



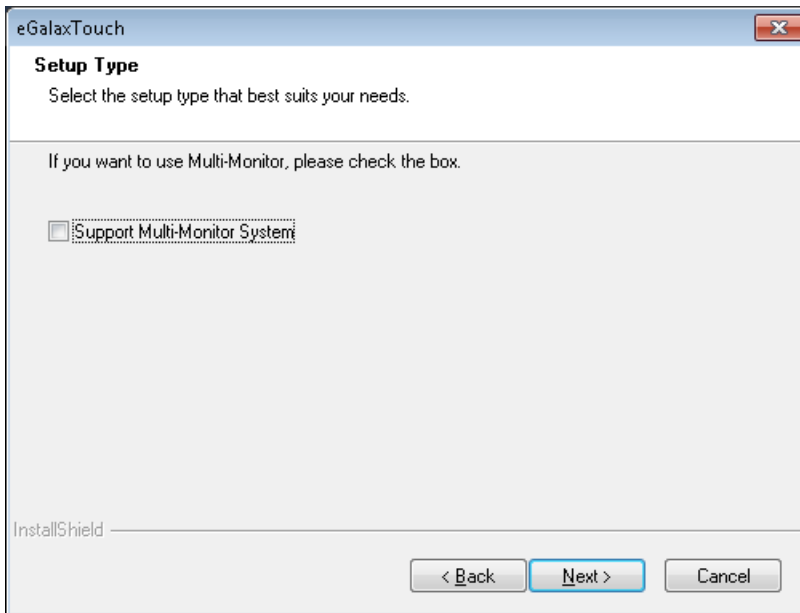
6. Select 'None' and click 'Next':



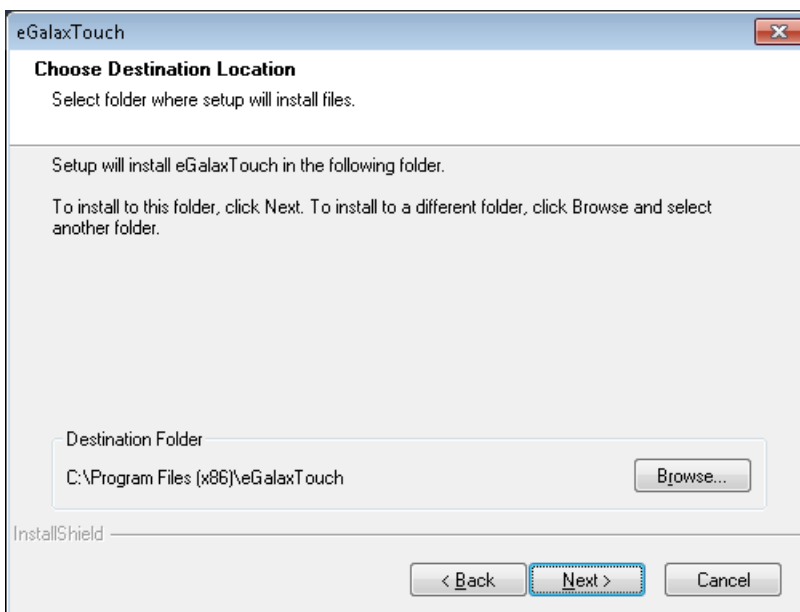
7. On the next window select **'OK'**:



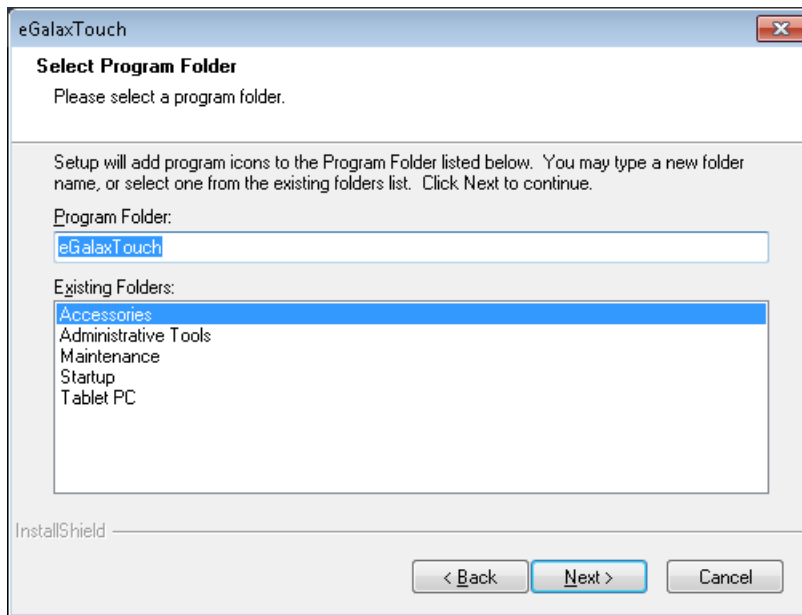
8. Uncheck **'Support Multi-Monitor System'** and click **'Next'**:



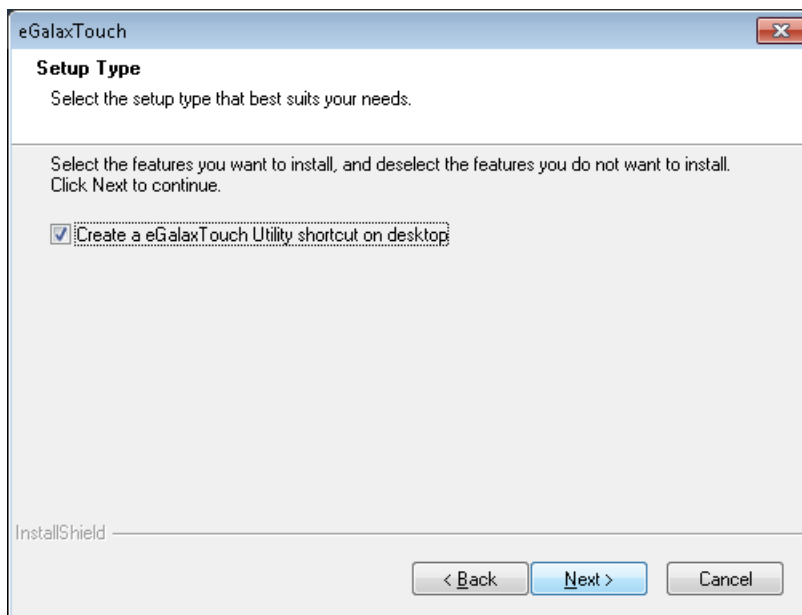
9. Leave the defaults and click **'Next'**:



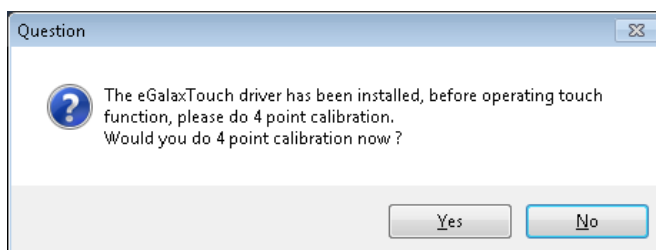
10. Leave the defaults and click **'Next'**:



11. Leave **'Create a eGalaxTouch Utility shortcut on desktop'** checked and click **'Next'**:



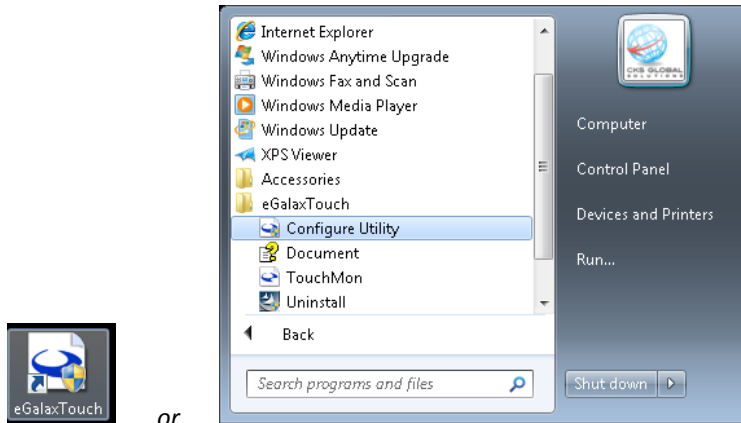
12. On the next window select **'No'**:



Calibrating Touchscreen

1. Double click the 'eGalaxTouch' shortcut on your desktop, or navigate via the Start menu to:

Start > All Programs > eGalaxTouch > Configure Utility

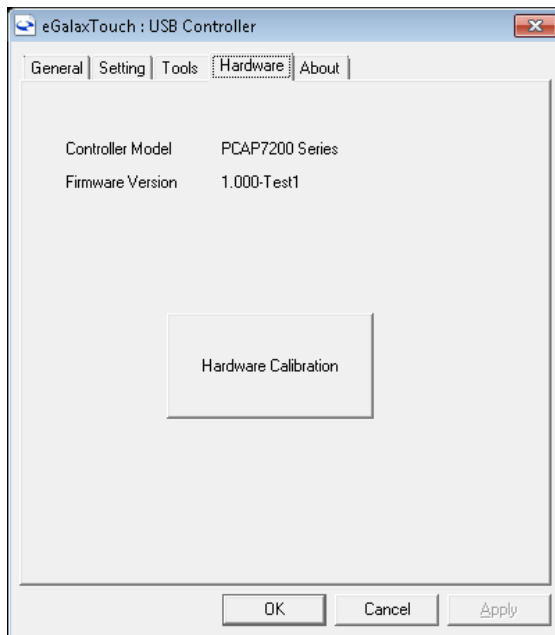


or

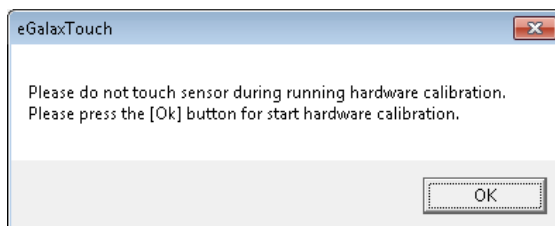
Note 1: Steps 2-4 is not an option on the S12 units, please skip to step 5.

Note 2: Please have your unit mounted in its final position before this next step.

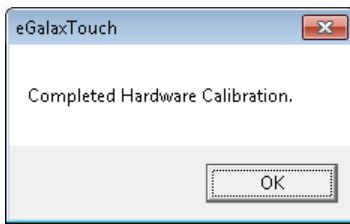
2. Select the 'Hardware' tab and click 'Hardware Calibration':



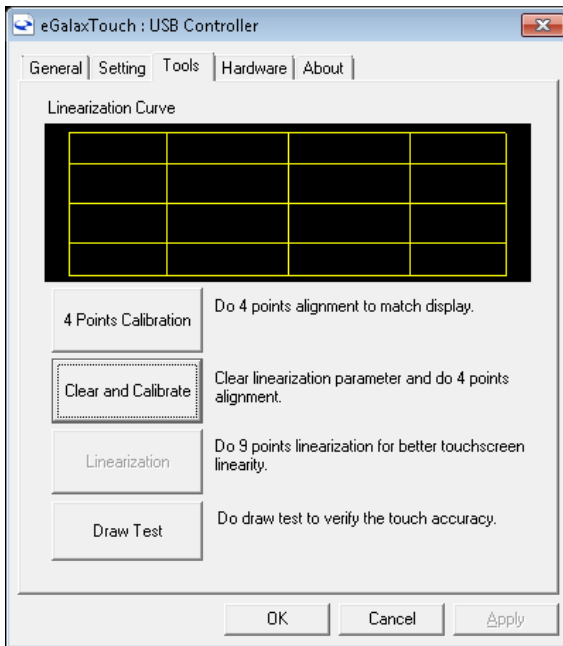
3. On the next window click 'OK' to start the hardware calibration:



4. Once the calibration has completed click '**OK**' on the next window:



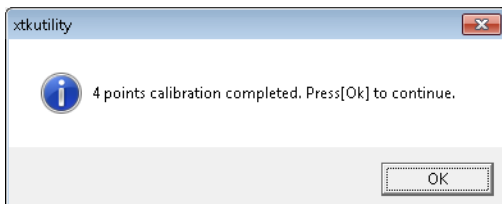
5. Select the '**Tools**' tab and click '**Clear and Calibrate**':



6. On the next window you must follow the on-screen instructions to carry out the 4 point calibration:



7. Once completed click '**OK**' on the next window:



8. You have now finished calibrating the PCAP Touchscreen.