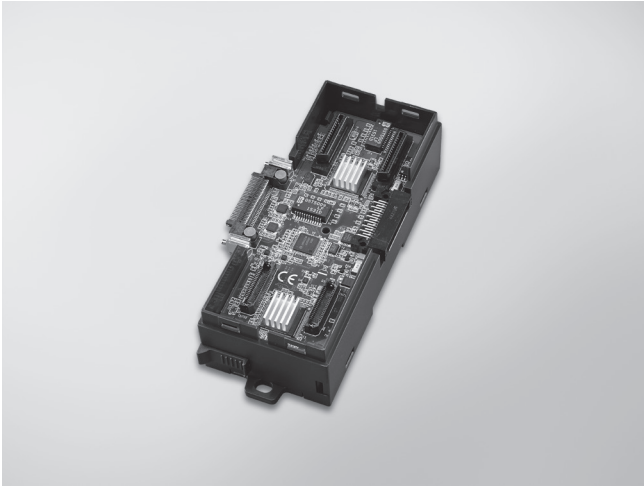


APAX-5402L

2-slot Expansion Backplane for APAX-5580



Features

- More flexibility to customer's application by providing 2x full function combo slots
- Bypass 24V_{DC} to the right side APAX connector for APAX-5002 expansion
- High Speed Connector support PCIe / SATA/ USB signal for APAX-5430/ APAX-5435/APAX-5490 expansion
- More features with lower cost by using EtherIO driver technology to replace the DSP function in the traditional backplane

Introduction

APAX-5402L is the backplane module for APAX-5580, supports 2 x Combo slots (High Speed Connector + APAX IO Connector) and right hand side connector for APAX-5002 expansion. It provides more flexibility for user's application with APAX-5430 / APAX-5435/APAX-5490 as well as all APAX IO modules.

Specifications

General

- **Certification** CE, FCC class A
- **Dimensions (W x H x D)** 54 x 151 x 38 mm
- **Enclosure** ABS+PC
- **Weight** 120 g
- **Mounting** DIN-rail, Wall mount (panel mount)
- **Power Consumption** 4.3 W @ 5 V_{DC}
- **Power Input** 5V_{DC} from APAX-5580 (24V_{DC} bypass to the right side APAX connector)
- **Slot Number** 2 x combo slots (Include 2x High Speed Connector + 2x APAX Connector)

Connectors

- **High Speed Connector** PCIe, SATA, USB Signal for APAX-5430/5435/5490 Expansion (lower side)
- **APAX IO Connector** APAX IO bus signal (upper side)
- **APAX Expansion Connector** APAX IO bus signal with 24V_{DC} for APAX-5002 expansion (right side)

Environment

- **Operating Temperature** -10 ~ 60°C (-4 ~ 140°F) @ 5 ~ 85% RH with 0.7m/s airflow
- **Storage Temperature** -40 ~ 85°C (-40 ~ 185°F)
- **Relative Humidity** 10 ~ 95% RH @ 40°C, non-condensing

*Note: APAX-5402L leverage EtherIO technology. EtherIO driver is needed to enable the functionality.

Ordering Information

- **APAX-5402L-E2A2AE** 2 expansion slots with APAX bus (EtherIO)